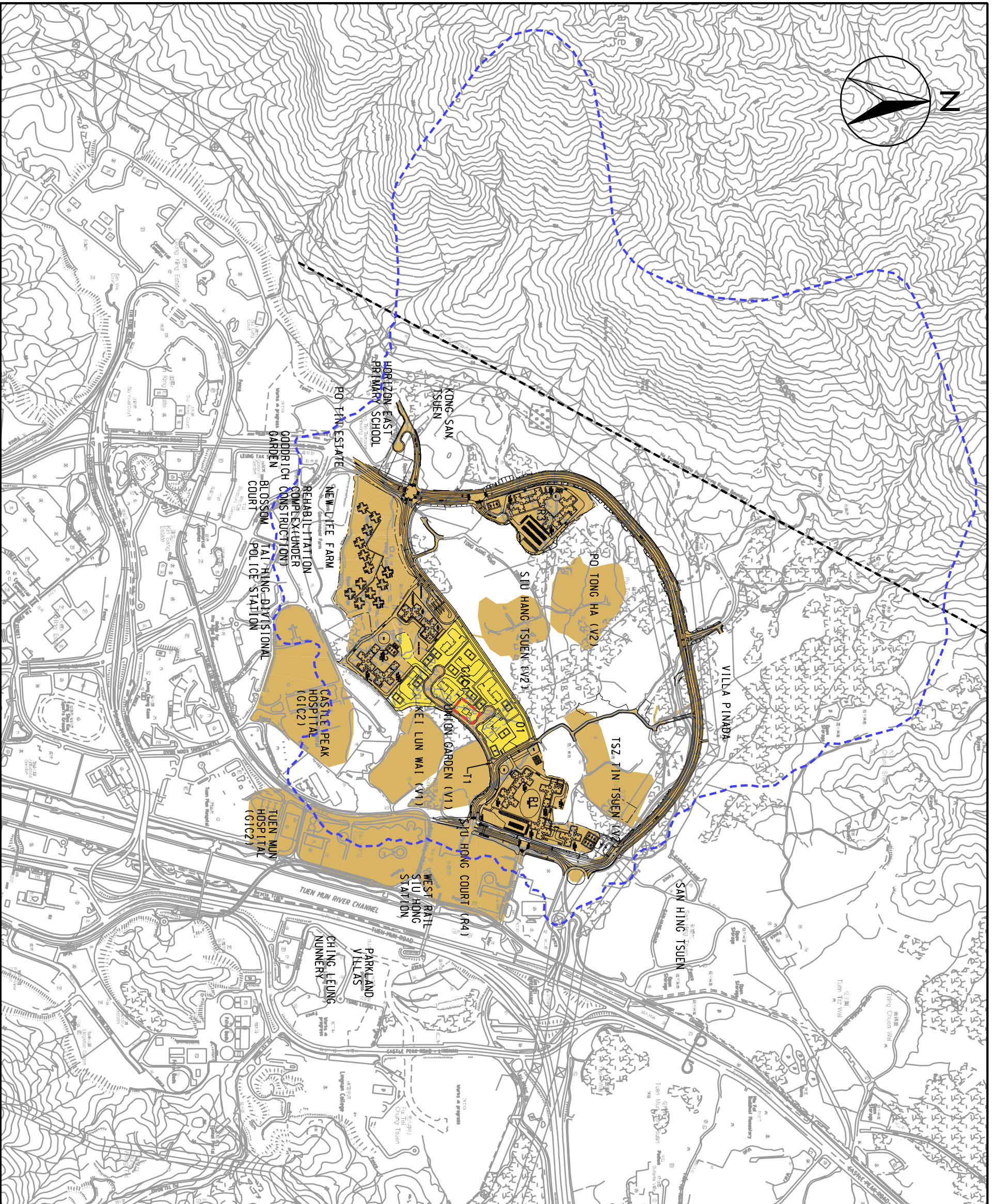


MAUNSELL | **AECOM**
 Maunsell Consultants Asia Ltd

AGREEMENT NO. CE 21/2005 (CE) - PHASES 1 AND 2 -
 ENVIRONMENTAL, TRAFFIC AND DRAINAGE IMPACT ASSESSMENT REVIEW - INVESTIGATION - ADDITIONAL
 SERVICES NO. 2 - ENVIRONMENTAL IMPACT ASSESSMENT FOR TUEN MUN AREA 54 SEWAGE PUMPING STATION
RESIDUAL VISUAL IMPACTS IN OPERATION PHASE



INTENSITY OF VISUAL IMPACT	
	SUBSTANTIAL-POSITIVE
	MODERATE-POSITIVE
	SLIGHT-POSITIVE
	INSUBSTANTIAL
	SLIGHT-NEGATIVE
	MODERATE-NEGATIVE
	SUBSTANTIAL-NEGATIVE
	NOT APPLICABLE

LEGEND:	
	SITE BOUNDARY
	LIMIT OF VISUAL INFLUENCE
	FIRING RANGE BOUNDARY

SCALE	DATE
1 : 10000	OCT. 2007

CHECK	DATE	BY
ELT/W/ST		LX

JOB NO.	DRAWING NO.	REV
73905	FIGURE 7.5.6	